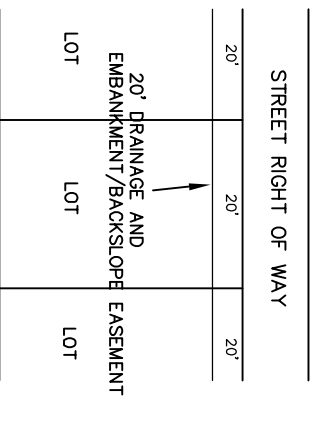
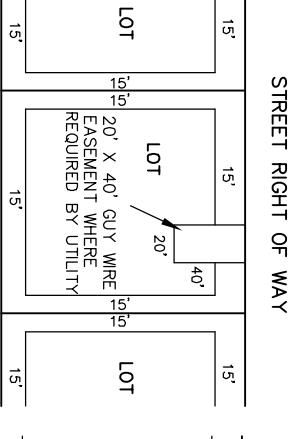


TYPICAL LOT WITH DRAINAGE AND EMBANKMENT/BACKSLOPE EASEMENTS



TYPICAL LOT WITH UTILITY EASEMENTS



- LEGEND
- IRF - STEEL ROD FOUND WITH 1/2" REBAR SET
  - OP - & SONS POB
  - ODM/WSS - DIST. FIELD
  - ODM/WSS - DIST. - RECORD
  - X - BARBED WIRE FENCE
  - CO - POWER/UTILITY POLE
  - W - WATER WELL/WATER METER (AS NOTED)
  - ST - SEPTIC TANK
  - CL - CHAIN LINK FENCE
  - W - WOOD PRIVACY FENCE
  - FF - 000.00' REQUIRED FINISHED FLOOR ELEVATION

CURVE	RADIUS	LENGTH	DELTA	CHORD	DISTANCE
C1	25.00	39.46	90°26'00"	S31°08'49"E	35.49
C2	25.00	21.03	48°11'23"	N7°32'30"E	20.41
C3	65.00	115.33	101°39'38"	N7°34'23"W	100.19
C4	65.00	78.62	69°18'05"	N1°45'28"E	73.91
C5	65.00	119.59	105°25'03"	S80°52'58"E	103.42
C6	25.00	21.03	48°11'23"	N5°21'67"W	20.41
C7	25.00	39.08	89°34'00"	S58°51'11"W	35.22
C8	25.00	39.46	90°26'00"	N31°08'49"W	35.49
C9	15.00	13.43	51°19'04"	S7°58'39"W	12.99
C10	65.00	54.90	48°23'31"	N7°6'50"E	53.28
C11	65.00	40.00	35°15'32"	S26°24'03"E	39.37
C12	65.00	71.47	62°59'56"	S22°43'41"W	67.82
C13	65.00	56.28	49°36'27"	S7°51'53"W	54.54
C14	65.00	57.99	51°07'09"	N5°36'19"W	56.09
C15	65.00	13.43	51°19'04"	S50°42'17"E	12.99
C16	25.00	39.46	90°26'00"	S31°08'49"E	35.49
C17	25.00	21.03	48°11'23"	N7°32'30"E	20.41
C18	65.00	110.69	97°34'23"	N7°54'60"W	97.79
C19	65.00	100.74	88°48'00"	N17°25'11"E	90.96
C20	25.00	21.03	48°11'23"	N31°22'00"W	20.41
C21	25.00	39.27	89°58'12"	S37°43'30"W	35.35
C22	25.00	39.27	89°58'12"	N31°22'00"W	35.35
C23	25.00	43.08	98°43'33"	S54°16'25"W	37.94
C24	265.00	39.30	8°29'53"	S00°39'42"W	39.27
C25	25.00	21.03	48°11'23"	S27°40'56"E	20.41
C26	65.00	83.41	73°31'17"	N8°48'01"E	77.80
C27	65.00	70.00	61°42'11"	N18°48'01"E	66.67
C28	65.00	121.77	107°20'17"	S09°04'01"E	104.73
C29	25.00	21.03	48°11'23"	N20°30'27"E	20.41
C30	335.00	49.69	8°29'53"	S00°39'42"W	49.64
C31	25.00	21.03	48°11'23"	N19°11'03"W	20.41
C32	65.00	114.32	100°46'20"	S07°06'25"W	100.15
C33	65.00	107.02	94°19'59"	N7°50'25"W	95.33
C34	25.00	21.03	48°11'23"	S22°16'07"E	20.41
C35	25.00	39.08	89°34'00"	N58°51'11"E	35.22
C36	65.00	42.84	98°11'01"	N54°32'41"E	37.79
C37	65.00	19.51	17°12'00"	S64°02'48"W	19.44
C38	65.00	28.75	25°20'18"	S40°50'35"E	28.51
C39	65.00	38.36	33°49'00"	N34°52'08"W	37.81
C40	65.00	23.47	20°41'28"	S32°56'01"E	23.35
C41	65.00	29.07	25°37'35"	S68°15'36"W	28.83

NO.	DATE	DESCRIPTION	BY
1			

**POLLOK & SONS**  
**SURVEYING, INC.**  
 FLORESVILLE, TEXAS  
 (830) 393-4770

JOB# 18-0229



RESIDUE OF THE  
 EDEN LAND INVESTMENTS, LP LAND  
 VOL. 1478, PG. 552

DANIEL HOPKINS SURVEY  
 ABSTRACT NO. 134

FELPS SERVICE AREA

VEIC SERVICE AREA

VEIC SERVICE AREA

VEIC SERVICE AREA

VEIC SERVICE AREA

VEIC SERVICE AREA

VEIC SERVICE AREA

VEIC SERVICE AREA

VEIC SERVICE AREA

VEIC SERVICE AREA

VEIC SERVICE AREA

VEIC SERVICE AREA

VEIC SERVICE AREA

VEIC SERVICE AREA

VEIC SERVICE AREA

VEIC SERVICE AREA

VEIC SERVICE AREA