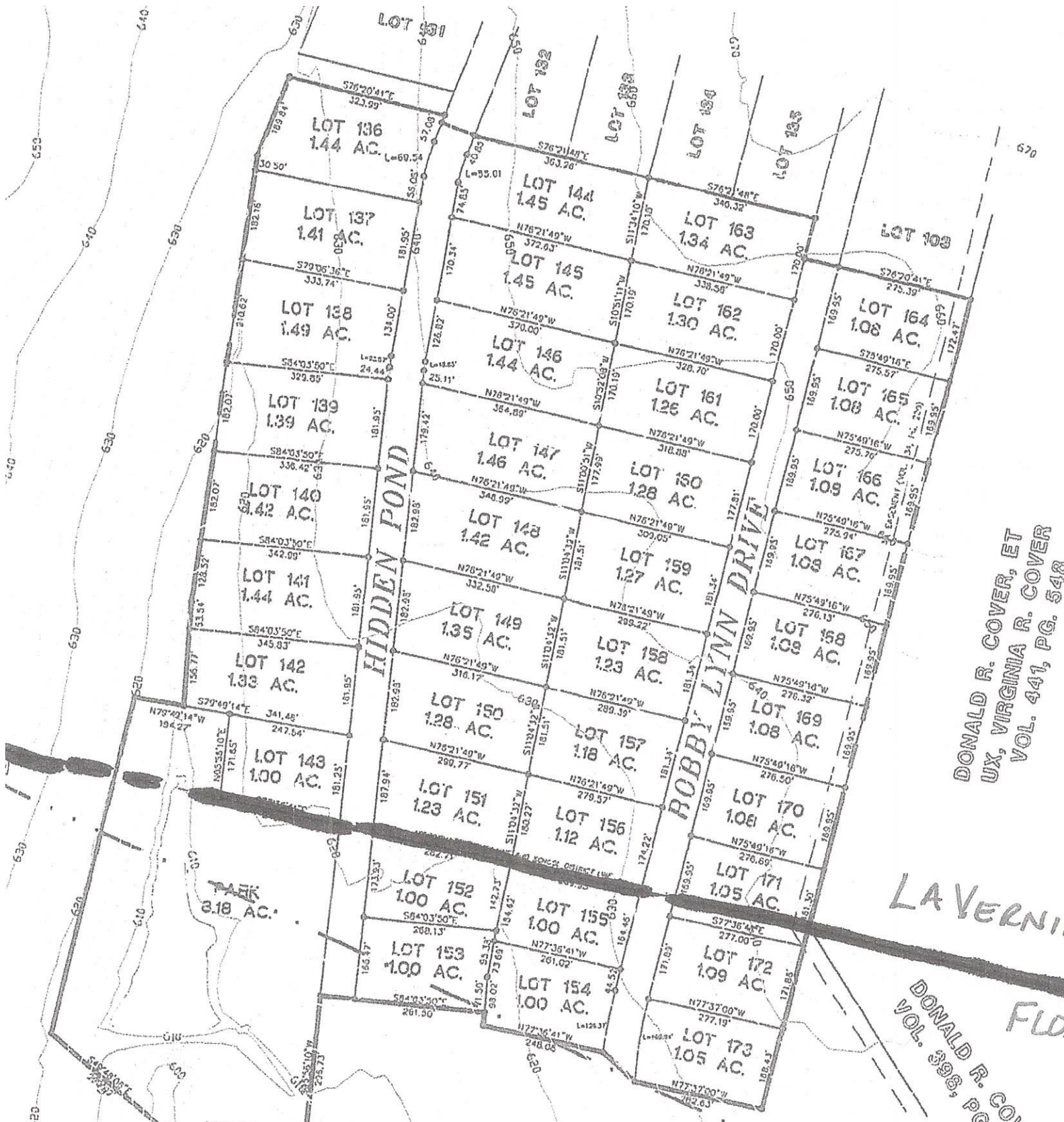


Available Lots

www.sanantoniocountry.com

(as of 03/31/2017)
Please call for current lot availability

CR 324 / Live Oak Drive
1.8 Miles to FM 3432 →



DANIEL HOPKINS SURVEY
 ABSTRACT NO. 134

DONALD R. COVER, ET
 UX, VIRGINIA R. COVER
 VOL. 441, PG. 548

LAVERNE

DONALD R. COVER
 VOL. 398, PG. 281

FLO